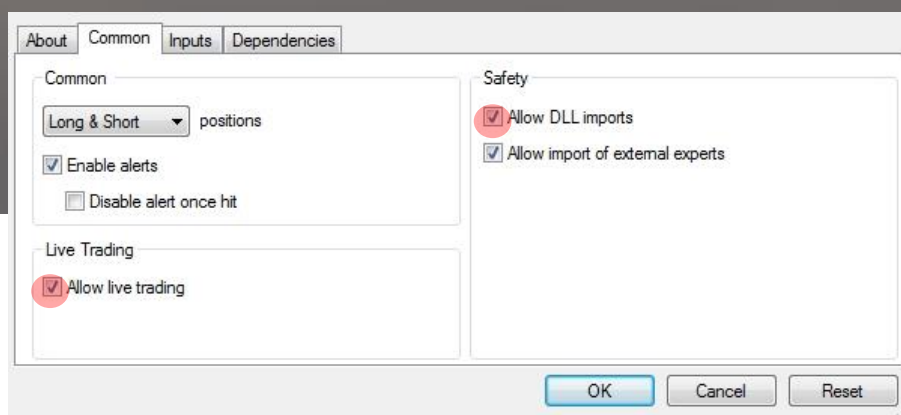


FOREXBOT28 USER MANUAL

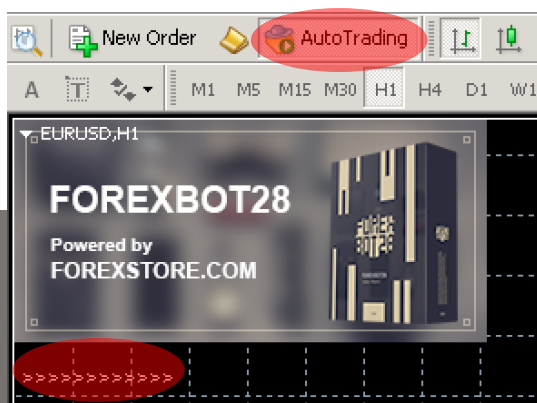


HOW TO INSTALL THE EA:

- Open your MT4 terminal. Go to File → Open Data Folder → MQL4 → Experts. Copy here the ForexBot28.ex4 file from the archive you received. Then go to File → Open Data Folder → MQL4 → Libraries. Copy here the ForexStore.dll file from the archive. Reboot your MT4 terminal.
- Open an any chart with any time frame, for example EURUSD M1 chart. Drag and drop ForexBot28 from the Navigator panel to the open chart. Choose Common tab and allow live trading with DLL imports as it is shown on the screenshot:



- Choose Inputs tab and set a mode and risk based on your deposit (more information about the parameters on the next page). We recommend to trade with the Conservative mode using 50% risk (or less). In case of trading with the Normal mode the recommended risk is 35% (or less). Trading with the Aggressive risk you should set 25% risk (or less). Other parameters you should keep as default.
- Make sure that AutoTrading is enabled and the symbol “>” is running:



NOW YOU ARE READY TO START!

HERE YOU CAN READ MORE ABOUT ALL THE PARAMETERS OF FOREXBOT28:

Auto Risk – the money management of ForexBot28. If “true” the EA will set lot size automatically, based on your deposit and the risk you set. If “false” the EA will use lot size, which you can set manually in Manual Lot.

Mode – “Conservative” – for the most reliable trading. It requires \$10000 for lot 0.01. “Normal” - balanced mode, requires \$5000 for lot 0.01. “Aggressive” – the riskiest but also the most profitable mode. It requires only \$3500 for 0.01 lot.

Manual Lot – lot size, which you can set manually.

Drawdown control – if “true” the EA works as usual and limits a drawdown. If “false” the EA deletes all StopLosses and stops limiting a drawdown. It helps to wait for a rollback to clients who are willing to take that risk.

Risk – a part of your deposit (in percentage) which the EA will use for trading. Doesn't work if Auto Risk is “false”. The minimum deposits which are required for the modes equal 100% risk. To be able to trade with a lower risk your deposit should be bigger than the required deposits. For trading with the Conservative mode using the recommended 50% risk, your deposit should be \$20000. For trading with the Normal mode and 35% risk - \$14300. For trading with the Aggressive mode and 25% risk - \$14000.

Slippage – slippage, which you can set manually.

NFA – if “Yes”, the EA will disable opening of possible opposite trades (no hedge) and apply FIFO rule. If “No”, the EA will trade without NFA limitations. **Hide Stops** will hide SL and TP for all orders, if that is needed, and the EA will close trades in the necessary moments at their Market prices, same as on our account. Please notice, despite the fact of enabling NFA option, some brokers may show a FIFO error from time to time, but it is not dangerous for the logic of the EA.

If you have any questions, please contact us: support@forexbot28.com

